



TAINUI TARANAKI

ki te Tonga



TAINUI TARANAKI
ki te Tonga

Te Ara Tapu - OUR JOURNEY TO SETTLEMENT

Ngāti Kōata • Ngāti Rārua • Wakatu • Ngāti Tama • Te Ātiawa



Mandating Hui



TAINUI TARANAKI

ki te Tonga

Mandating Hui

- Introduction
- Overview of history
- Crown settlement process
 - Large Natural Groups
- Tainui Taranaki ki te Tonga
- Claims to be represented
- Communication strategy
- Open discussion and questions
- Resolution



TAINUI TARANAKI

ki te Tonga

Iwi Reps / Directors

- Ngati Koata - Roma Hippolite & Dion Paul
- Ngati Rarua - Barry Mason & Molly Luke
- Wakatu - Rore Stafford & Waari Ward-Holmes
- Ngati Tama - Fred Te Miha & John Mitchell
- Te Atiawa - Dawn McConnell & Harvey Ruru



TAINUI TARANAKI

ki te Tonga

Overview of history

- Taranaki, Tainui – alliances and intrigue
- From Taranaki to Te Upoko
- From Kapiti to Te Tau Ihu
 - Waiorua Pa, tuku of Tutepourangi
 - Skirmishes, subjugation, alliances
 - Retribution by Tainui, Taranaki iwi
 - Whenua raupatu



TAINUI TARANAKI

ki te Tonga

Historic Crown Acts

- NZ Company “purchases”
- Spain Commission
- Grey’s 1853 taking of 918 acres
- McLean’s “Waipounamu Purchases 1853-1856
- Browne’s Native Reserves Act 1856 & Public Works Act
- Perpetually renewable leases (1880’s)
- ‘uneconomic interests’ (1950’s)
- Freeholding of Maori reserves to lessees (1960’s)



TAINUI TARĀNAKI

ki te Tonga

Crown Settlement Process

- Agencies involved:
 - Office of Treaty Settlements (Mandate & Negotiations)
 - Te Puni Kokiri (Observers & Mandate)
 - Crown Forestry Rental Trust (Funding)
- Large Natural Groups
- Comprehensive



TAINUI TARANAKI

ki te Tonga

Large Natural Group

- Crown's large natural group policy
- 3 large natural groups in Te Tau Ihu
- Our group includes N. Koata, N. Rarua, Wakatu, N. Tama, Te Atiawa
 - Hapu & whanau claims come under Iwi trusts
- Wakatu is kaitiaki of Wai56
 - Wai56 is a pan-tribal claim
- We are planning to settle in 4 to 5 years



TAINUI TARANAKI

ki te Tonga

Comprehensive Settlement

- Includes all historic (iwi, hapu & whanau) claims and all WAI numbers
- Historic claims - before 21 Sept 1992
- Comprehensive - whether a claim is registered or not with the Waitangi Tribunal
- The next step is Deed of Mandate



TAINUI TARANAKI

ki te Tonga

Tainui Taranaki ki te Tonga

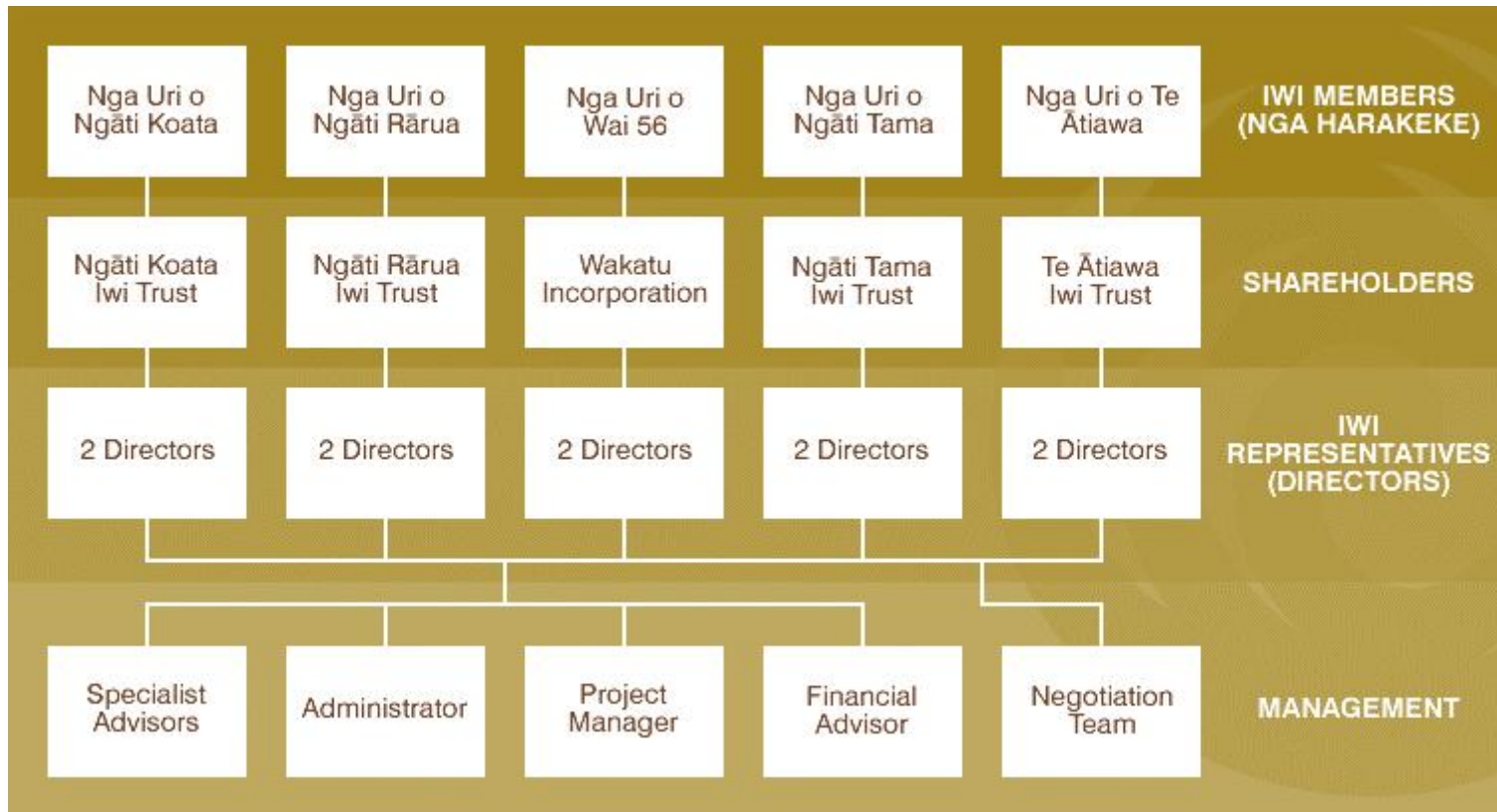
- A legal entity to oversee the comprehensive settlement of historic treaty claims
- Limited liability company with charitable status
- Four Iwi trusts plus Wakatu have equal shares
- Offices are based in Nelson
- 10 Directors and management staff
- Decisions still to be made:
 - Negotiation framework and team
 - Post settlement entity



TAINUI TARANAKI

ki te Tonga

Organisation Structure





TAINUI TARANAKI

ki te Tonga

Accountability systems

- Appointment of Iwi representatives => Directors
- Participation in Iwi Trust AGM and SGM
- Confirmation of the Mandate
- Communications strategy and reporting back
- Fundamental decisions go back to the people
- Board decisions are unanimous
- Ratification by the Harakeke on any draft settlement deal



TAINUI TARANAKI

ki te Tonga

Action Plan for 2005...2008

- Governing Entity, Mandate Hui (2005)
- Deed of Mandate recognised (2006)
- Negotiations (2006/07)
- Agreement in Principle (2007/08)
- Draft Deed of Settlement (2008)
- Ratification by Iwi (2008)
- Settlement Passes into Law (2008)
- Increase iwi membership enrolments (2005..)



TAINUI TARANAKI

ki te Tonga

The claims area





TAINUI TARANAKI

ki te Tonga

Claims to be represented

- 56 – South Island (Nelson) Tenth
- 102 – Te Runanganui o Te Tau Ihu
- 566 – Ngati Koata Iwi
- 594 – Ngati Rarua Iwi
- 607 – Te Atiawa Iwi
- 723 – Ngati Tama Iwi



TAINUI TARARAKI

ki te Tonga

Claims to be represented

- 104 – Whakarewa
- 124 – Waikawa
- 469 – N. Awa
- 648 – Kotua
- 830 – Sandy Bay, Marahau, Motueka
- 851 – Totaranui
- 924 – Waikawa
- 935 – LINZ
- 1002 – H Rangiauru
- 953 - Aquaculture
- 1005 – Aquaculture
- 1007 – Aquaculture
- 220 – Whangamoā
- 379 – Crown purchases
- 920 – Waikawa
- 921 – Waikawa
- 927 – Waikawa
- 1043 – Ohau, Tapata
- 262 – Flora & Fauna
- 796/852 – Petroleum...



TAINUI TARANAKI

ki te Tonga

Communication Strategy

- Tainui Taranaki panui
- Iwi / Wakatu panui
- Information booklet
- Website – www.tainuitaranaki.co.nz
- Toll free number - 0800 088 588
- Iwi / Wakatu AGM
- Newspaper, TV and radio advertising
- Information, Mandating & other hui



TAINUI TARANAKI

ki te Tonga

Mandating Program

- 14 Mandating Hui throughout NZ
- Objective - to seek the mandate from Iwi members to negotiate the comprehensive settlement of our historic treaty claims
- To settle there is only “one waka”



TAINUI TARANAKI

ki te Tonga

Questions & Discussion



TAINUI TARANAKI

ki te Tonga

Resolution

The iwi of Tainui Taranaki ki te Tonga (Ngāti Koata, Ngāti Rārua, Ngāti Tama and Te Ātiawa) mandate Tainui Taranaki ki te Tonga Limited to enter into negotiations with the Crown regarding the comprehensive settlement of all Ngāti Koata, Ngāti Rārua, Wakatu Incorporation (Wai 56), Ngāti Tama and Te Ātiawa historical Treaty claims in Te Tau Ihu o te waka a Maui (Northern South Island) and Te Tai Poutini (West Coast of the South Island) and south of Te Parinui o Whiti (East Coast of the South Island).



TAIUI TARANAKI

ki te Tonga



TAIUI TARANAKI
ki te Tonga

Te Ara Tapu - OUR JOURNEY TO SETTLEMENT

Ngāti Kōkōta • Ngāti Rārua • Wakatu • Ngāti Tama • Te Ātiawa

